

# bydesign

SUMMER 09



SEATTLE design  
CENTER

# project focus

**WHERE:** Cle Elum, Washington  
**FIRM:** DA STARK Interiors  
**DESIGNER:** Dixie Stark

Nestled in the beauty of the Cascade Mountains, this Northwest mountain retreat provides a refined rustic flavor — ideal for the clients' casual entertaining lifestyle.

## ABOUT THE PRODUCT:

- Cabinets designed and provided through Refined Woodworks.
- Kitchen drapery fabrics by Kravet / Lee Jofa.
- Breakfast table is a custom-sized Collection Reproductions piece from Joan Lockwood Collections.
- Iron lanterns in the great room, by Dennis & Leen, from the Jennifer West showroom.
- Upholstery specified from the Michael Folks (Lewis Mittman) and Stephen Earls (Minton-Spidell) showrooms.
- Tables from both Designer Furniture Galleries and the Michael Folks Showroom.
- Christopher Mathie's dramatic acrylic on canvas was commissioned through Trammell-Gagné.

## ABOUT THE DESIGNER:

Dixie Stark is founder and principal of DA STARK Interiors. Dixie holds an interior design degree from the University of Arkansas. Among other honors and press, she was featured as one of *House Beautiful's*, "Top Designers Under 40" in 2003.

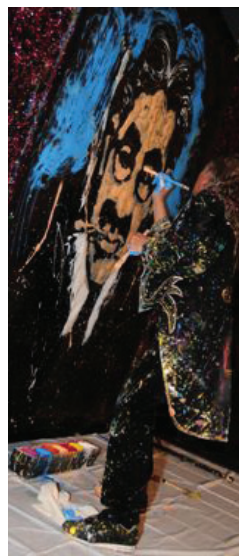


*For consideration in Project Focus, please submit photos and 500 word or less project description to Sara Coe at [sara.coe@hines.com](mailto:sara.coe@hines.com)*

# sdsc scene



**ABOVE** | HGTV's Vern Yip, with local panelists (left to right) Dana Hamel, Diana Cutler, Christian Ursino and Jennifer Randall, tackles audience design questions at Eye on Design-April 25.



**LEFT** | Performance artist Art Explosion entertains with a 6-minute portrait of Groucho Marks at the Art Alive! party.

**ABOVE** | Party revelers Carla Campbell, Paula Kennedy, Wayne Martin and Kayron Brewer enjoy the festivities.